



15 Chestnut Drive, Willows Pasture



Open Plan Living Kitchen



Open Plan Living Kitchen



Open Plan Living Kitchen



Willow Pastures Hull Road, Skirlaugh, HU11 5AE

£119,950

Want to escape reality in your very own Holiday Home, surrounded by picturesque countryside and nature?
Then look no further!

This stunning holiday lodge is a fantastic example of executive living with modern interiors, versatile accommodation across one floor and its very own Hot Tub, it is ideal for families and couples alike.

Willow Pastures Country Park is an independent holiday park which opened in early 2018. The location is ideal for holidays with a country pub next door with a great range of food and drink and a play park in the gardens.

Willow pastures is pet friendly and open all year round. The popular Skirlaugh garden centre is in walking distance which also offers a lovely variety of food and drink. There are also spa treatments available on site to book at your leisure.

This is a private sale and we are advertising on the owners behalf.

Please call us on 01964 532121 for more information.

Open Plan Living/Dining/Kitchen

On entry, you'll find a handy "boot room" on your right, with an area for coats and as the name suggests, boots and shoes, as well as space for cleaning equipment, and there is a full size washer/dryer housed in here too. Look left, through the feature wall divide and you'll see the beautiful living area, it's spacious and inviting and is stylishly decorated in neutral tones. There are two freestanding sofas and a separate chair that are complimented with bolster and scatter cushions. There is a stylish entertainment wall unit complete with a branded 40" TV over an Optiflame fire and useful shelving to both sides.

One of the many lovely features in the Toronto, is the dining area, placed at the front of the lodge, beneath a large window, with sumptuously upholstered wrap around seating and 3 freestanding chairs, creating a comfortable, relaxing area. In true Swift style, this area is highlighted with a trendy black and white wall, bringing in a great contrast.

The large U shaped kitchen is stunning, truly! With attractive matte marble effect worksurface (lots of it!), full gloss units with brushed steel handles, and the all important breakfast bar with 3 stools, it certainly has the wow factor! Complete with integrated microwave and fridge freezer, modern glass fronted oven and grill, curved extractor fan, integrated 12 place setting dishwasher, 5 burner gas hob with wok burner, a wine cooler, and even a pop up socket, it's got everything you could want. The Velux window offers even more light and ventilation.

Bathroom

The main bathroom has a huge shower and plenty of floor space. A

tall towel warmer, and fawn, tactile wallpaper that catches the light are standout features. Both bathrooms also have an extractor fan and LED illuminated vanity mirror with infrared sensor and demisting pad.

Master Bedroom/En Suite

The master bedroom, or suite, provides you with a little slice of heaven. There is a super comfortable king size bed that also lifts up to offer extra storage. The large window is dressed with opulent curtains, and there is lots more storage in the overhead cupboards. There is a walk in dressing area, with an enormous wardrobe and a dressing table with stool. Swish or what?! The ensuite has a full size bath, with overhead shower and screen, basin and W.C.

Twin Bedroom

The twin has ample space for guests, again with overhead storage, and a long upholstered headboard, so the beds can easily be pushed together to make a double if required. Both bedrooms have a TV point on the wall.

Decking

Just through the French doors, you will find the large front decking area complete with your very own Hot Tub. The decking has a small gate to the side for easy access to your parking area and your private garden. Surrounded by hedges, the really is the perfect place to relax in privacy and enjoy your surroundings.

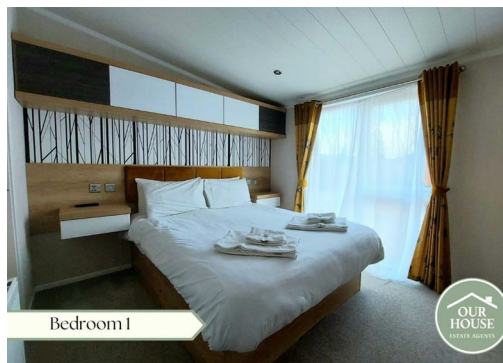
*Please note, the land is owned by the Willow Pastures and ground rent will need to be paid in order to keep the holiday home on the site.



Open Plan Living Kitchen



Open Plan Living Kitchen



Bedroom 1



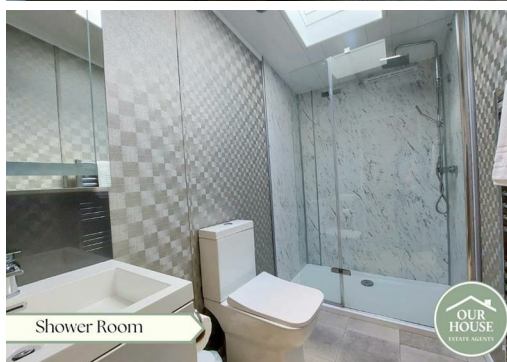
Bedroom 1



Wardrobe



Bedroom 2



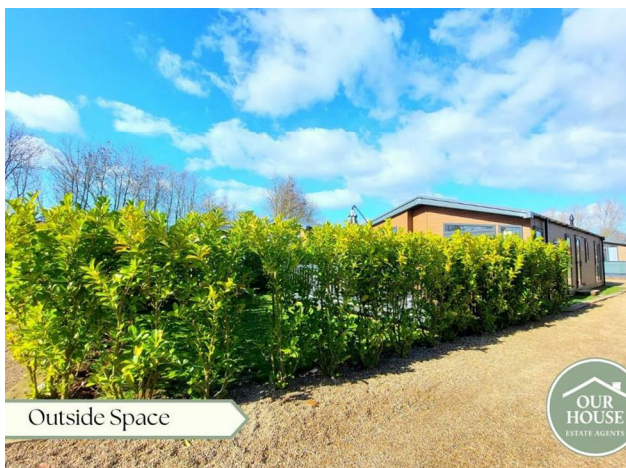
Shower Room



Outside Space



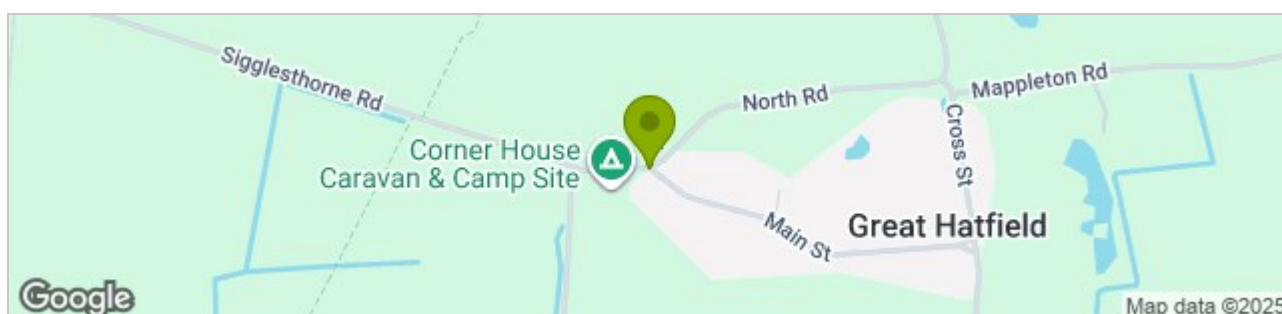
Outside Space



Outside Space



Outside Space



These particulars, whilst believed to be accurate are set out as a general outline only for guidance and do not constitute any part of an offer or contract. Intending purchasers should not rely on them as statements of representation of fact, but must satisfy themselves by inspection or otherwise as to their accuracy. No person in this firm's employment has the authority to make or give any representation or warranty in respect of the property.

Our House Estate Agents

20 Newbegin Hornsea, East Yorkshire, HU18 1AL

T. 01964 532121 | E. office@ourhouseestateagents.co.uk